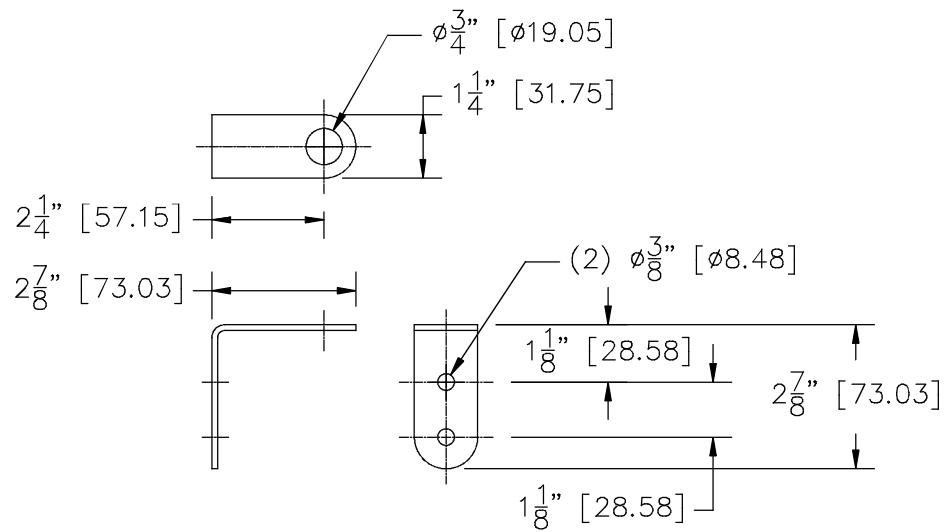
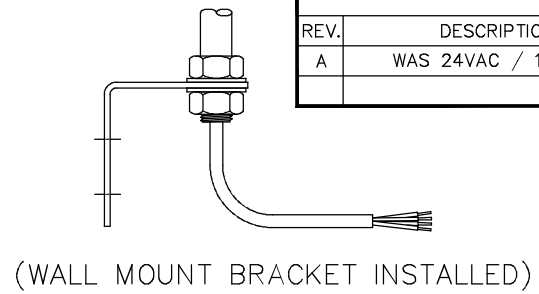


TOWER LIGHT ASSEMBLY
 CONTINUOUS LIGHTS
 24VDC / 120VAC



WALL MOUNT BRACKET DETAIL
 BRACKET & HOLE LOCATIONS
 MAY VARY BY SUPPLIERS

	TOWER HEIGHT "H" [DIMENSIONS IN & mm]	
1 LIGHT	5⅞" [149.22]	
2 LIGHTS	8⅜" [211.73]	
3 LIGHTS	10⅞" [276.23]	
4 LIGHTS	13½" [342.90]	
5 LIGHTS	16" [406.40]	

REVISIONS				
REV.	DESCRIPTION	DATE	DWN BY	APP'D BY
A	WAS 24VAC / 120VAC	6-14-13	JLF	

PART # LD-52XX-100

THIS DOCUMENT CONTAINS PROPRIETARY INFORMATION WHICH IS NOT TO BE REPRODUCED OR TRANSFERRED TO OTHER DOCUMENTS OR DISCLOSED TO OTHERS, OR USED FOR MANUFACTURING OR ANY OTHER PURPOSE WITHOUT PRIOR WRITTEN PERMISSION OF AMERICAN LED-gible®. ALL DRAWINGS AND PRINTS ARE TO BE RETURNED UPON REQUEST.

American LED-gible®
 1776 Lone Eagle Street Phone: 614-851-1100
 Columbus, OH 43228 USA Fax: 614-851-1121

TOLERANCES (EXCEPT AS NOTED)	DO NOT SCALE PRINT	DESCRIPTION: TOWER LIGHT OUTLINE DIMENSION DRAWING	
DEC. ±3.18	SCALE:	DATE: 11-19-10	DRAWING NUMBER
FRAC. ±1/8	DWN BY: FCP/JLF	DATE:	LD-52XX-100
ANG. ±1.0°	APP'D BY:		REV. A
MATERIAL:	R&D #:	Sheet 1 of 1	